

HEALTH SERVICES

Telehealth Ontario 1-866-797-0000

Public Health Units

Waterloo Regional 519-883-2000
Guelph Office 519-821-2370
Main Office Fergus 519-846-2715
Palmerston Office 519-343-2240
Peel Region 905-791-7800

Centre for Addiction and Mental Health

1-800-463-6273
1-800-661-1111

Local Canadian Mental Health Association

Wellington-Dufferin Branch 1-888-255-2642
Waterloo Office 519-744-7645
Fergus Branch Services 519-766-4450
Orangeville Office 519-938-8776
24 hour Crisis 1-877-825-9011
Mobile Crisis of Peel 905-278-9036

Poison Information Centre

1-866-268-9017

Drugs & Alcohol Treatment Information Line (DART) 1-800-565-8603

Workplace Safety Insurance Board (WSIB)

Information and assistance, compensation, services & pensions for employees disabled through employment, vocational rehabilitation.

Toronto: 1-800-387-0080

Kingston: 1-800-267-9461

Farm Safety Association

1-800-361-8855

ANIMAL CARE

Ontario Farm Animal Council (OFAC)

Assists farmers in providing adequate or improved care for their animals and/or in following practices that meet industry standards. The Helpline is a farmer helping farmer service of advice and referral. Calls received by the service are given to the appropriate commodity group(s) for follow-up.

Animal Care Helpline:

519-837-1326

www.ofac.org

Ontario Society for the Prevention of Cruelty to Animals (OSPCA)

Hotline: 1-888-668-7722

Guelph Humane Society 519-824-3091

K-W Humane Society 519-745-5615

Cambridge & District Humane Soc. 519-623-7722

For additional information, factsheets and resources, contact:

Agricultural Information Contact Centre:
1-877-424-1300

E-mail: ag.info.omafra@ontario.ca

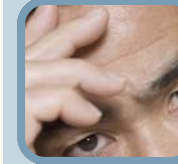
Northern Ontario Regional Office:
1-800-461-6132

www.ontario.ca/omafra



FINANCIAL RESOURCES AND SUPPORT SERVICES FOR FAMILIES In...

Waterloo, Wellington, and Area



Prepared by:
Ontario Ministry of Agriculture,
Food and Rural Affairs
Client Service Branch
Elora Resource Centre
6484 Wellington Rd. 7
Elora, Ontario N0B 1S0
Phone: 519-846-0941
Fax: 519-846-8178

EMPLOYMENT SERVICES

Service Canada 1-800-206-7218

Local Service Canada 1-800-265-3595

Employment Resource Waterloo 519-883-2101

Employment Services Cambridge 519-740-5700

Social Services Guelph 519-837-2670

2nd Chance Employment 519-843-5513

Workforce Planning Board of
Waterloo, Wellington, Dufferin 519-622-7122

Ontario Works

Guelph Resource Centre 519-837-2670

Peel Region 905-793-9200

Waterloo Region Wide 519-883-2100

FINANCIAL RESOURCES

Growing Forward

Growing Forward, a federal-provincial-territorial initiative, supports the development and implementation of best practices in four key areas: Environment and Climate Change; Food Safety and Traceability; Business Development; and Biosecurity. Participants are encouraged to develop strategies across all areas to meet their business goals through a variety of information sessions and workshops as well as one-on-one training and technical assistance.

Business Development for Farm Businesses
Growing Forward Business Development for Farm Businesses incorporates self-assessment and action plan development with a range of cost-share advisory services and skills development opportunities to help reach your farm business goals.

Business Development for Farm Businesses offers:

Growing Your Farm Profits Workshops

- Learn how to do a self-assessment on your farm business. There is no cost to attend this workshop.

Action Plan Review and Sign-off

- Having your action plan reviewed and signed off is the next step towards accessing cost-share opportunities.

Farm Financial Assessment

- Cost-share funding is available to access a professional Farm Financial Advisor. The program covers up to \$2400 of eligible costs to hire an Advisor. The participant pays \$100.
- If you are experiencing severe financial difficulties, you may be able to access the Farm Financial Assessment without completing the Growing Your Farm Profits Workshop.

Agriculture Skills Development

- Identifying a specific need for farm-related training and skills development in your action plan enables you to access cost-share funding up to 50 per cent to a maximum of \$3000.

FINANCIAL RESOURCES cont'd

Advanced Business Planning

- Eligible farm businesses will receive cost-share funding to work with an Advanced Planning Consultant for up to 50 per cent to a maximum of \$8000.

Business Plan Implementation

- To help you implement elements of your Advanced Business Plan, eligible farm businesses can receive cost-share funding for up to 50 per cent to a maximum of \$3000 for one-time non-capital costs.

For more information:

To learn more about other Growing Forward Programs like environment and climate change, food safety and traceability, and biosecurity, please contact the Ontario Ministry of Agriculture Food and Rural Affairs by:

Phone: 1-888-479-3931

Website: www.ontario.ca/growingforward

Email: growingforward@ontario.ca

Growing Forward, a federal-provincial-territorial initiative

Farm Credit Canada

Provides business and financial solutions for farm families and agri-business — www.fcc-sca.ca

Head office/Regina 1-888-332-3301

Guelph 519-824-6360

Listowel 519-291-3450

Farm Debt Mediation

The Farm Debt Mediation Service provides farmers and their creditors with mediation services pursuant to the Federal Farm Debt Mediation Act (FDMA) to help them arrive at a mutually satisfactory arrangement. The service is private and confidential.
www.agr.gc.ca/fdms 1-866-452-5556

Local Credit Counselling Resources

Guelph Office 519-824-6360

Listowel Office 519-291-3450

Kitchener Counselling Centre 519-743-6333

Peel Incharge Debt Solutions 1-888-424-3454

EMOTIONAL SUPPORT AND REFERRAL

The Farm Line

The Farm Line is a confidential emotional support, information and counseling telephone service that is available across Ontario for farmers and their families. Trained peer counselors talk to the caller, identify resources in the caller's area and help the caller determine the steps to follow to address the caller's needs.

1-888-451-2903

www.thefarmline.ca

Email: thefarmline@thefarmline.ca

Local Distress Centres

K-W Counseling 519-884-0000

C.M.H.A. Help Line, Kitchener 519-745-1166

Guelph Office 1-888-821-3760

Peel Region 905-278-7208

FAMILY SUPPORT SERVICES

Alcoholics Anonymous

Guelph 519-836-1522

Kitchener 519-742-6183

Cambridge 519-558-8222

Al-Anon Mtg. Information Line 1-800-425-2666

Addiction Help Line

1-800-272-1937

Gambling Help Line

1-888-230-3505

Childrens Aid Society

Wellington 519-824-2410

Waterloo 519-576-0540

Dufferin 519-941-1530

Peel 905-363-6131

Children with Severe Disabilities 1-800-646-3209

Kids Help Line (up to 21 yrs.) 1-800-668-6868

Parent Help Line 1-888-603-9100

Family Services of Peel 905-453-5775

FAMILY SUPPORT SERVICES cont'd

Local Food Banks

Arthur 519-848-3272

Caledon 905-951-2300

Clifford 519-327-8588

Centre Wellington, Fergus 519-787-1401

Elmira South 519-669-5139

Guelph 519-767-1380

Harriston 519-338-2825

Mount Forest 519-323-9218

Palmerston 519-343-3659

Rockwood 519-833-9696

Waterloo Region 519-743-5576

Salvation Army - Community & Family Services

Cambridge 519-623-1221

Guelph 519-836-9360

Kitchener 519-745-4215

St. Jacobs Family Support Centre 519-664-2370

Woolwich Community Services 519-669-5139

Local Community Living

YMCA of Guelph 519-824-5150

YWCA of Kitchener 519-576-8856

YWCA of Cambridge 519-650-0800