

# QUARTERLY ONTARIO PIG INVENTORY

September 1, 2011

## Introduction

The purpose of this project by the University of Guelph-Ridgetown Campus is to develop greater market intelligence in the hog industry by collecting production data on a quarterly basis. The report is modeled after the USDA's Hogs and Pigs Report with respect to inventory categories and production intentions. The producer sample used was stratified by production size with surveys sent by mail, fax or e-mail to approximately 15% of the producer base. The results of this survey are estimated to be within +/- 12.4% for approximately 95% of the time.

## Results

The Ontario Inventory of All Pigs on September 1, 2011 was 3.05 million head. This is up 2% from June 1, 2011 estimates by Ridgetown Campus (3.0 million head) and 7% higher than October 1, 2011 estimates provided by Statistics Canada (2.85 million head).

The Breeding Stock Inventory is calculated to be 331.8 thousand head, which is up slightly from June 1, 2011 figures provided by Ridgetown Campus (331.5 thousand head) and 4% lower than the October 1, 2011 estimates provided by Statistics Canada (346.9 thousand head).

The Market Hog Inventory was determined to be 2.72 million head which is up 2% from June values estimated by Ridgetown Campus and 9% higher than October values supplied by Statistics Canada.

Ontario producers were estimated to have had 153.3 thousand sows farrow during the June 2011 – August 2011 quarter and intended to have 159.6 thousand sows farrow during the September 2011 – November 2011 quarter. The average pigs saved per litter is estimated to be 9.67 for the June 2011 – August 2011 quarter and 9.62 for the September 2011 – November 2011 quarter.

Quarterly marketing intentions are expected to be 1,153 thousand head for the September – November time period and 1,073 thousand head for the December – February time period. The intentions for marketing under the Pool or Pool Plus system is calculated to be about 8% of Ontario's quarterly marketings.

The intended market hog sales by quarter are:

<b>Quarter</b>	<b>Marketings ('000 Head)</b>
September-November	1,152.76
December-February	1,073.16

Estimated death loss figures for the June-August quarter were:

<b>Category</b>	<b>Death Loss (%)</b>	<b>Category</b>	<b>Death Loss (%)</b>
Under 23 kg	9.5	81 kg and over	1.3
23-54 kg	1.9	All Categories	4.3
54-81 kg	1.5		

Quarterly Ontario Pig Inventory – September 1, 2011

In summary, compared to the Ridgetown Campus June 1, 2011 inventory estimate, it would appear the Ontario breeding stock inventory was similar while market pigs were up 2% on September 1. The most recent U.S.D.A. Hogs and Pigs Report showed the U.S. inventory of all hogs and pigs on September 1, 2011 as being up 1% from one year ago and up 3% from last quarter. The U.S. breeding inventory was up 1% from a year ago and up slightly from June 1.

**Table 1: September 1, 2011 Pig Inventory**

<b>Inventory Items</b>	<b>('000) Head</b>
Total Pigs	3,048.80
Breeding Inventory	331.85
Market Pigs	2,716.95
<b>Litter Rate (Pigs Saved)</b>	<b>Number</b>
June 2011 - August 2011	9.67
September 2011 - November 2011	9.62
<b>Farrowing Intentions</b>	<b>('000) Head</b>
June 2011 - August 2011	153.27
September 2011 - November 2011	159.58
<b>Marketing Intentions</b>	<b>('000) Head</b>
September 2011 - November 2011	1,152.76
December 2011 - February 2012	1,073.16
<b>Pool/Pool Plus Marketing Intentions</b>	<b>('000) Head</b>
September 2011 - November 2011	92.02
December 2011 - February 2012	85.67

Quarterly Ontario Pig Inventory – September 1, 2011

Table 2: Pigs: Inventory Number by Class, Weight Group, and Quarter, Ontario, 2009-2011

Item	2009	2010	2011	2011 as % of		Item	2009	2010	2011	2011 as % of	
	1,000 head	1,000 head	1,000 head	2009	2010		1,000 head	1,000 head	1,000 head	2009	2010
				Percent	Percent					Percent	Percent
<b>Statistics Canada</b>						<b>University of Guelph, Ridgetown Campus</b>					
<b>January 1 Inventory</b>						<b>March 1 Inventory</b>					
Total Pigs	3,104.5	2,870.8	2,898.2	93	101	Total Pigs (or All Pigs)	3,376.8	3,119.4	2,982.6	88	96
Breeding Stock 6 Months And Over	359.7	348.0	350.0	97	101	Breeding Stock	373.4	353.1	332.3	89	94
Sows And Gilts 6 Months And Over	353.0	341.5	344.5	98	101	Sows And Gilts For Breeding	364.3	344.7	324.9	89	94
Boars 6 Months And Over	6.7	6.5	5.5	82	85	Boars And Young Males For Breeding	9.0	8.4	7.4	82	88
All Other Pigs	2,744.8	2,522.8	2,548.2	93	101	Market (or All Other Pigs)	3,003.4	2,766.3	2,650.3	88	96
by Weight Groups						by Weight Groups					
Under 20 Kg (Under 44 Pounds)	1,004.1	927.3	938.9	94	101	Under 23 Kg (Under 50 Pounds)	1,085.8	1,000.1	958.1	88	96
20-60 Kg (44-132 Pounds)	965.3	873.8	840.9	87	96	23-54 Kg (50-119 Pounds)	729.6	672.0	643.8	88	96
Over 60 Kg (Over 132 Pounds)	775.4	721.7	768.4	99	106	54-81 Kg (120-179 Pounds)	647.4	596.3	571.3	88	96
						81 Kg And Over (180 Pounds And Over)	540.5	497.8	477.0	88	96
<b>April 1 Inventory</b>						<b>June 1 Inventory</b>					
Total Pigs	2,975.3	2,735.0	2,851.3	96	104	Total Pigs (or All Pigs)	3,318.1	3,072.8	3,001.6	90	98
Breeding Stock 6 Months And Over	359.0	329.9	350.2	98	106	Breeding Stock	370.5	339.3	331.5	89	98
Sows And Gilts 6 Months And Over	352.5	324.1	345.7	98	107	Sows And Gilts For Breeding	361.6	331.3	324.3	90	98
Boars 6 Months And Over	6.5	5.8	4.5	69	78	Boars And Young Males For Breeding	9.0	8.0	7.2	81	90
All Other Pigs	2,616.3	2,405.1	2,501.1	96	104	Market (or All Other Pigs)	2,947.5	2,733.5	2,670.1	91	98
by Weight Groups						by Weight Groups					
Under 20 Kg (Under 44 Pounds)	975.3	840.1	921.6	94	110	Under 23 Kg (Under 50 Pounds)	1,065.6	988.2	965.3	91	98
20-60 Kg (44-132 Pounds)	865.0	837.8	825.3	95	99	23-54 Kg (50-119 Pounds)	716.0	664.0	648.6	91	98
Over 60 Kg (Over 132 Pounds)	776.0	727.2	754.2	97	104	54-81 Kg (120-179 Pounds)	635.4	589.3	575.6	91	98
						81 Kg And Over (180 Pounds And Over)	530.5	491.9	480.5	91	98

Quarterly Ontario Pig Inventory – September 1, 2011

Table 2 (cont'd): Pigs: Inventory Number by Class, Weight Group, and Quarter, Ontario, 2009-2011

Item	2009	2010	2011	2011 as % of		Item	2009	2010	2011	2011 as % of	
	1,000 head	1,000 head	1,000 head	2009	2010		1,000 head	1,000 head	1,000 head	2009	2010
				Percent	Percent					Percent	Percent
<b>Statistics Canada</b>						<b>University of Guelph, Ridgetown Campus</b>					
<b>July 1 Inventory</b>						<b>September 1 Inventory</b>					
Total Pigs	3,064.8	2,804.6	2,835.0	93	101	Total Pigs (or All Pigs)	3,274.3	3,083.5	3,048.8	93	99
Breeding Stock 6 Months And Over	357.6	341.0	346.0	97	101	Breeding Stock	365.7	333.9	331.8	91	99
Sows And Gilts 6 Months And Over	350.8	335.0	341.0	97	102	Sows And Gilts For Breeding	357.1	326.0	324.6	91	100
Boars 6 Months And Over	6.8	6.0	5.0	74	83	Boars And Young Males For Breeding	8.7	7.9	7.3	84	92
All Other Pigs	2,707.2	2,463.6	2,489.0	92	101	Market (or All Other Pigs)	2,908.6	2,749.6	2,716.9	93	99
by Weight Groups						by Weight Groups					
Under 20 Kg (Under 44 Pounds)	1,007.7	891.4	897.5	89	101	Under 23 Kg (Under 50 Pounds)	1,051.5	994.0	982.2	93	99
20-60 Kg (44-132 Pounds)	870.3	829.6	838.0	96	101	23-54 Kg (50-119 Pounds)	706.5	667.9	660.0	93	99
Over 60 Kg (Over 132 Pounds)	829.2	742.6	753.5	91	101	54-81 Kg (120-179 Pounds)	627.0	592.7	585.7	93	99
						81 Kg And Over (180 Pounds And Over)	523.4	494.8	489.0	93	99
<b>October 1 Inventory</b>						<b>December 1 Inventory</b>					
Total Pigs	3,013.8	2,850.0	2,850.5	95	100	Total Pigs (or All Pigs)	3,171.8	3,027.1			
Breeding Stock 6 Months And Over	355.6	339.0	346.9	98	102	Breeding Stock	362.1	331.6			
Sows And Gilts 6 Months And Over	349.0	333.0	341.9	98	103	Sows And Gilts For Breeding	353.6	324.0			
Boars 6 Months And Over	6.6	6.0	5.0	76	83	Boars And Young Males For Breeding	8.6	7.7			
All Other Pigs	2,658.2	2,511.0	2,503.6	94	100	Market (or All Other Pigs)	2,809.7	2,695.4			
by Weight Groups						by Weight Groups					
Under 20 Kg (Under 44 Pounds)	1,020.4	953.2	884.8	87	93	Under 23 Kg (Under 50 Pounds)	1,015.7	974.4			
20-60 Kg (44-132 Pounds)	843.8	784.0	831.7	99	106	23-54 Kg (50-119 Pounds)	682.5	654.8			
Over 60 Kg (Over 132 Pounds)	794.0	773.8	787.1	99	102	54-81 Kg (120-179 Pounds)	605.7	581.1			
						81 Kg And Over (180 Pounds And Over)	505.6	485.1			

Note:  
 Statistics Canada Source: CANSIM, matrix 9506 (Livestock Surveys, Pigs, Ontario, Quarterly) and Catalogue 23-603-XPE  
 Statistics Canada Dates: January 1, April 1, July 1, October 1; UGRC Dates: March 1, June 1, September 1, December 1.  
 UGRC - University of Guelph, Ridgetown Campus; - represents not available

Quarterly Ontario Pig Inventory – September 1, 2011

Table 3: Farrowings: Number of Sows, Pig Crop and Pigs Per Litter, Ontario, 2009-2011 <sup>1</sup>

Item	2009					2010					2011					2011 as % of							
	2009		2010		2011		2009		2010		2011		2009		2010		2011						
<b>Statistics Canada</b>										<b>University of Guelph, Ridgetown Campus</b>													
<b>Sows Farrowing</b>										<b>Sows Farrowing</b>													
Jan-Mar	182.0	169.3	172.2	95	102	Dec-Feb <sup>2</sup>	177.6	168.1	155.1	87	92	Jan-Mar	182.0	169.3	172.2	95	102	Dec-Feb <sup>2</sup>	177.6	168.1	155.1	87	92
Apr-Jun	185.6	172.0	161.1	87	94	Mar-May	176.2	158.6	152.4	86	96	Apr-Jun	185.6	172.0	161.1	87	94	Mar-May	176.2	158.6	152.4	86	96
Jan-Jun	367.6	341.3	333.3	91	98	Dec-May <sup>2</sup>	353.9	326.7	307.6	87	94	Jan-Jun	367.6	341.3	333.3	91	98	Dec-May <sup>2</sup>	353.9	326.7	307.6	87	94
Jul-Sep <sup>3</sup>	186.9	172.0	172.0	92	100	Jun-Aug	175.9	156.6	153.3	87	98	Jul-Sep <sup>3</sup>	186.9	172.0	172.0	92	100	Jun-Aug	175.9	156.6	153.3	87	98
Oct-Dec <sup>3</sup>	171.4	173.3	173.5	101	100	Sep-Nov <sup>3</sup>	175.9	159.9	159.6	91	100	Oct-Dec <sup>3</sup>	171.4	173.3	173.5	101	100	Sep-Nov <sup>3</sup>	175.9	159.9	159.6	91	100
Jul-Dec <sup>3</sup>	358.3	345.3	345.5	96	100	Jun-Nov <sup>3</sup>	351.8	316.5	312.8	89	99	Jul-Dec <sup>3</sup>	358.3	345.3	345.5	96	100	Jun-Nov <sup>3</sup>	351.8	316.5	312.8	89	99
<b>Pigs Per Litter (Born Alive)</b>										<b>Pigs Per Litter (Born Alive)</b>													
Jan-Mar	10.54	10.55	10.50	100	100	Dec-Feb <sup>2</sup>	10.43	10.56	10.71	103	101	Jan-Mar	10.54	10.55	10.50	100	100	Dec-Feb <sup>2</sup>	10.43	10.56	10.71	103	101
Apr-Jun	10.51	10.50	10.50	100	100	Mar-May	10.36	10.52	10.87	105	103	Apr-Jun	10.51	10.50	10.50	100	100	Mar-May	10.36	10.52	10.87	105	103
Jan-Jun	10.52	10.52	10.50	100	100	Dec-May <sup>2</sup>	10.39	10.54	10.79	104	102	Jan-Jun	10.52	10.52	10.50	100	100	Dec-May <sup>2</sup>	10.39	10.54	10.79	104	102
Jul-Sep <sup>3</sup>	10.50	10.53	10.50	100	100	Jun-Aug	10.69	10.70	10.99	103	103	Jul-Sep <sup>3</sup>	10.50	10.53	10.50	100	100	Jun-Aug	10.69	10.70	10.99	103	103
Oct-Dec <sup>3</sup>	10.53	10.53	-	-	-	Sep-Nov <sup>3</sup>	10.61	10.65	10.93	103	103	Oct-Dec <sup>3</sup>	10.53	10.53	-	-	-	Sep-Nov <sup>3</sup>	10.61	10.65	10.93	103	103
Jul-Dec <sup>3</sup>	10.51	10.53	-	-	-	Jun-Nov <sup>3</sup>	10.65	10.68	10.96	103	103	Jul-Dec <sup>3</sup>	10.51	10.53	-	-	-	Jun-Nov <sup>3</sup>	10.65	10.68	10.96	103	103
<b>Pig Crop (Born Alive)</b>										<b>Pig Crop (Born Alive)</b>													
Jan-Mar	1,918.0	1,785.7	1,808.3	94	101	Dec-Feb <sup>2</sup>	1,852.3	1,774.8	1,661.1	90	94	Jan-Mar	1,918.0	1,785.7	1,808.3	94	101	Dec-Feb <sup>2</sup>	1,852.3	1,774.8	1,661.1	90	94
Apr-Jun	1,950.2	1,805.2	1,691.6	87	94	Mar-May	1,826.3	1,668.6	1,657.3	91	99	Apr-Jun	1,950.2	1,805.2	1,691.6	87	94	Mar-May	1,826.3	1,668.6	1,657.3	91	99
Jan-Jun	3,868.2	3,590.9	3,499.9	90	97	Dec-May <sup>2</sup>	3,678.6	3,443.3	3,318.5	90	96	Jan-Jun	3,868.2	3,590.9	3,499.9	90	97	Dec-May <sup>2</sup>	3,678.6	3,443.3	3,318.5	90	96
Jul-Sep <sup>3</sup>	1,962.3	1,811.6	1,806.0	92	100	Jun-Aug	1,880.9	1,675.3	1,684.0	90	101	Jul-Sep <sup>3</sup>	1,962.3	1,811.6	1,806.0	92	100	Jun-Aug	1,880.9	1,675.3	1,684.0	90	101
Oct-Dec <sup>3</sup>	1,804.6	1,824.2	-	-	-	Sep-Nov <sup>3</sup>	1,866.6	1,703.8	1,744.9	93	102	Oct-Dec <sup>3</sup>	1,804.6	1,824.2	-	-	-	Sep-Nov <sup>3</sup>	1,866.6	1,703.8	1,744.9	93	102
Jul-Dec <sup>3</sup>	3,766.9	3,635.8	-	-	-	Jun-Nov <sup>3</sup>	3,747.5	3,379.1	3,428.9	91	101	Jul-Dec <sup>3</sup>	3,766.9	3,635.8	-	-	-	Jun-Nov <sup>3</sup>	3,747.5	3,379.1	3,428.9	91	101
<b>Pigs Per Litter (Saved)</b>										<b>Pigs Per Litter (Saved)</b>													
Jan-Mar	9.45	9.59	9.39	99	98	Dec-Feb <sup>2</sup>	9.18	9.29	9.42	103	101	Jan-Mar	9.45	9.59	9.39	99	98	Dec-Feb <sup>2</sup>	9.18	9.29	9.42	103	101
Apr-Jun	9.47	9.47	9.23	97	98	Mar-May	9.12	9.26	9.57	105	103	Apr-Jun	9.47	9.47	9.23	97	98	Mar-May	9.12	9.26	9.57	105	103
Jan-Jun	9.46	9.53	9.32	98	98	Dec-May <sup>2</sup>	9.15	9.27	9.49	104	102	Jan-Jun	9.46	9.53	9.32	98	98	Dec-May <sup>2</sup>	9.15	9.27	9.49	104	102
Jul-Sep <sup>3</sup>	9.46	9.49	9.46	100	100	Jun-Aug	9.41	9.42	9.67	103	103	Jul-Sep <sup>3</sup>	9.46	9.49	9.46	100	100	Jun-Aug	9.41	9.42	9.67	103	103
Oct-Dec <sup>3</sup>	9.47	9.53	-	-	-	Sep-Nov <sup>3</sup>	9.34	9.38	9.62	103	103	Oct-Dec <sup>3</sup>	9.47	9.53	-	-	-	Sep-Nov <sup>3</sup>	9.34	9.38	9.62	103	103
Jul-Dec <sup>3</sup>	9.47	9.51	-	-	-	Jun-Nov <sup>3</sup>	9.37	9.40	9.65	103	103	Jul-Dec <sup>3</sup>	9.47	9.51	-	-	-	Jun-Nov <sup>3</sup>	9.37	9.40	9.65	103	103
<b>Pig Crop (Saved)</b>										<b>Pig Crop (Saved)</b>													
Jan-Mar	1,719.9	1,622.9	1,617.8	94	100	Dec-Feb <sup>2</sup>	1,630.0	1,561.8	1,461.8	90	94	Jan-Mar	1,719.9	1,622.9	1,617.8	94	100	Dec-Feb <sup>2</sup>	1,630.0	1,561.8	1,461.8	90	94
Apr-Jun	1,758.1	1,628.5	1,487.4	85	91	Mar-May	1,607.1	1,468.3	1,458.4	91	99	Apr-Jun	1,758.1	1,628.5	1,487.4	85	91	Mar-May	1,607.1	1,468.3	1,458.4	91	99
Jan-Jun	3,478.0	3,251.4	3,105.2	89	96	Dec-May <sup>2</sup>	3,237.1	3,030.1	2,920.2	90	96	Jan-Jun	3,478.0	3,251.4	3,105.2	89	96	Dec-May <sup>2</sup>	3,237.1	3,030.1	2,920.2	90	96
Jul-Sep <sup>3</sup>	1,768.3	1,632.7	1,626.4	92	100	Jun-Aug	1,655.2	1,474.2	1,481.9	90	101	Jul-Sep <sup>3</sup>	1,768.3	1,632.7	1,626.4	92	100	Jun-Aug	1,655.2	1,474.2	1,481.9	90	101
Oct-Dec <sup>3</sup>	1,623.6	1,651.6	-	-	-	Sep-Nov <sup>3</sup>	1,642.6	1,499.4	1,535.5	93	102	Oct-Dec <sup>3</sup>	1,623.6	1,651.6	-	-	-	Sep-Nov <sup>3</sup>	1,642.6	1,499.4	1,535.5	93	102
Jul-Dec <sup>3</sup>	3,391.9	3,284.3	-	-	-	Jun-Nov <sup>3</sup>	3,297.8	2,973.6	3,017.5	91	101	Jul-Dec <sup>3</sup>	3,391.9	3,284.3	-	-	-	Jun-Nov <sup>3</sup>	3,297.8	2,973.6	3,017.5	91	101

Note:

<sup>1</sup> May not add due to rounding. <sup>2</sup> December preceding year. <sup>3</sup> Intentions for 2011. - Represents not available.

Statistics Canada Dates: January 1, April 1, July 1, October 1; UGRC Dates: March 1, June 1, September 1, December 1; UGRC - University of Guelph, Ridgetown Campus

**Table 4: Monthly Intentions: Number of Sows Farrowing, Pigs Per Litter, and Pig Crop, Ontario, 2009-2011  
December - November<sup>1,2</sup>**

Month	Sows Farrowing			Pigs Born			Pigs Saved			Pig Crop (Born)			Pig Crop (Saved)		
	2009	2010	2011	2009	2010	2011	2009	2010	2011	2009	2010	2011	2009	2010	2011
	<i>1,000 head</i>			<i>Number/Litter</i>			<i>Number/Litter</i>			<i>1,000 head</i>			<i>1,000 head</i>		
Dec	59.1	53.6	51.9	10.53	11.34	11.24	9.27	9.98	9.89	622.7	607.4	583.8	547.9	534.5	513.8
Jan	60.5	55.9	52.3	10.38	10.02	10.01	9.13	8.81	8.81	627.5	560.4	524.0	552.2	493.1	461.1
Feb	58.0	58.6	50.9	10.37	10.36	10.88	9.13	9.12	9.57	602.1	607.0	553.3	529.9	534.2	486.9
Mar	58.1	53.4	51.6	10.39	10.35	10.76	9.14	9.11	9.47	603.2	553.0	555.5	530.8	486.7	488.9
Apr	58.4	54.2	50.1	10.58	10.40	11.03	9.31	9.15	9.71	618.1	564.3	552.1	543.9	496.6	485.8
May	59.8	50.9	50.7	10.12	10.82	10.84	8.91	9.52	9.54	605.0	551.3	549.7	532.4	485.1	483.8
Jun	59.5	51.7	53.9	10.33	10.87	10.99	9.09	9.57	9.67	614.5	561.9	592.0	540.7	494.5	521.0
Jul	60.3	52.5	52.6	10.70	10.54	10.26	9.42	9.28	9.02	645.4	553.2	539.3	567.9	486.8	474.6
Aug	56.1	52.4	46.8	11.06	10.69	11.81	9.74	9.41	10.39	621.0	560.2	552.7	546.5	492.9	486.4
Sep	58.3	52.8	53.0	10.58	10.83	10.96	9.31	9.53	9.64	616.6	571.5	580.5	542.6	502.9	510.9
Oct	58.5	53.6	54.3	10.70	10.50	10.81	9.42	9.24	9.51	626.6	562.7	586.5	551.4	495.1	516.1
Nov	59.1	53.5	52.3	10.55	10.64	11.04	9.28	9.37	9.72	623.4	569.7	577.9	548.6	501.4	508.5
Total	705.7	643.2	620.4	10.52	10.61	10.88	9.26	9.33	9.57	7,426.1	6,822.4	6,747.4	6,534.9	6,003.7	5,937.7

Note:

<sup>1</sup> December preceding year. <sup>2</sup> May not add due to rounding. - Represents not available.

Death Loss is calculated at 12% (based on historical figures). Pig Crop (Born) = Sows Farrowing x Pigs Born; Pig Crop (Saved) = Sows Farrowing x Pigs Saved

Quarterly Ontario Pig Inventory – September 1, 2011

**Table 5: Quarterly Marketing Intentions: Number of Pigs, Ontario, 2002 - 2011**

Quarter	Intentions (I) 1,000 head	Actual <sup>2</sup> (A) 1,000 head	Difference (D=A-I) 1,000 head	Difference (D=A/I) %
Dec 2001 - Feb 2002	1,175	1,254	79.3	106.8%
Mar 2002 - May 2002	1,186	1,208	22.4	101.9%
Jun 2002 - Aug 2002	1,220	1,211	(8.6)	99.3%
Sep 2002 - Nov 2002	1,294	1,361	67.5	105.2%
Dec 2002 - Feb 2003	1,266	1,334	68.0	105.4%
Mar 2003 - May 2003	1,341	1,301	(39.9)	97.0%
Jun 2003 - Aug 2003	1,281	1,284	2.3	100.2%
Sep 2003 - Nov 2003	1,391	1,426	35.3	102.5%
Dec 2003 - Feb 2004	1,421	1,392	(28.8)	98.0%
Mar 2004 - May 2004	1,409	1,359	(49.8)	96.5%
Jun 2004 - Aug 2004	1,371	1,294	(76.8)	94.4%
Sep 2004 - Nov 2004	1,456	1,532	76.2	105.2%
Dec 2004 - Feb 2005	1,438	1,419	(19.3)	98.7%
Mar 2005 - May 2005	1,374	1,332	(41.8)	97.0%
Jun 2005 - Aug 2005	1,315	1,301	(13.7)	99.0%
Sep 2005 - Nov 2005	1,414	1,431	17.7	101.2%
Dec 2005 - Feb 2006	1,366	1,353	(13.0)	99.0%
Mar 2006 - May 2006	1,306	1,252	(54.3)	95.8%
Jun 2006 - Aug 2006	1,312	1,348	35.1	102.7%
Sep 2006 - Nov 2006	1,401	1,382	(18.5)	98.7%
Dec 2006 - Feb 2007	1,372	1,302	(70.1)	94.9%
Mar 2007 - May 2007	1,343	1,222	(121.1)	91.0%
Jun 2007 - Aug 2007	1,356	1,398	42.1	103.1%
Sep 2007 - Nov 2007	1,441	1,487	46.3	103.2%
Dec 2007 - Feb 2008	1,479	1,439	(40.0)	97.3%
Mar 2008 - May 2008	1,409	1,348	(61.2)	95.7%
Jun 2008 - Aug 2008	1,257	1,301	43.7	103.5%
Sep 2008 - Nov 2008	1,347	1,354	7.7	100.6%
Dec 2008 - Feb 2009	1,335	1,273	(61.7)	95.4%
Mar 2009 - May 2009	1,247	1,209	(38.1)	96.9%
Jun 2009 - Aug 2009	1,181	1,261	79.6	106.7%
Sep 2009 - Nov 2009	1,237	1,306	68.7	105.6%
Dec 2009 - Feb 2010	1,205	1,224	19.7	101.6%
Mar 2010 - May 2010	1,154	1,084	(69.9)	93.9%
Jun 2010 - Aug 2010	1,053	1,059	6.4	100.6%
Sep 2010 - Nov 2010	1,121	1,173	51.7	104.6%
Dec 2010 - Feb 2011	1,078	1,108	29.3	102.7%
Mar 2011 - May 2011	1,084	1,092	7.8	100.7%
Jun 2011 - Aug 2011	1,039	1,067	28.3	102.7%
Sep 2011 - Nov 2011 <sup>1</sup>	1,153	-	-	-
Dec 2011 - Feb 2012 <sup>1</sup>	1,073	-	-	-

Note:

<sup>1</sup> Intentions for September 2011 - February 2012. <sup>2</sup> Ontario Pork Universal Services reported hog volume.

Difference = Actual - Intentions; - Represents not available.

Marketing Intentions are estimated using inventory and assumptions for death loss, international exports, replacements and marketing period.

Figure 1: Marketings (% Difference, Actual vs Intentions), 2004-2011

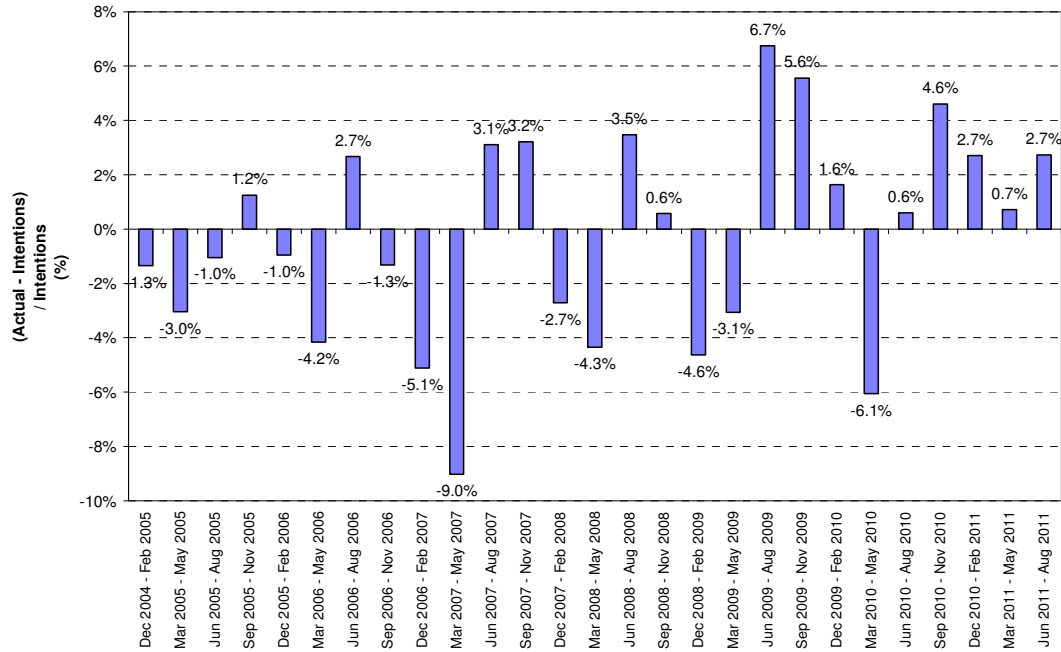


Table 6: Pigs, Supply-Disposition Balance Sheet, Quarterly, Ontario, 2011

JUN 2011 - AUG 2011		'000 head
1. Inventory at June 1		3,001.6
2. Pig Crop <sup>1</sup>		1,481.9
3. Imports		0.0
4. Total Supply (1+2+3)		4,483.5
5. Hogs marketed in Ontario <sup>2</sup>		1,067.5
6. Feeder exports to the United States <sup>3</sup>		175.6
7. Deaths & Condemnations <sup>4</sup>		191.6
8. Output (5+6+7)		1,434.7
9. Inventory at September 1		3,048.8
10. Residual (4-8-9)		0.0

Note:

<sup>1</sup> Number of pigs born (and saved) during the quarter that were either on hand at the end of the quarter or had been sold.

<sup>2</sup> Source: Ontario Pork Universal Services

<sup>3</sup> Source: Agriculture and Agri-Food Canada, Monthly Livestock and Meat Trade Report

<sup>4</sup> Estimate.